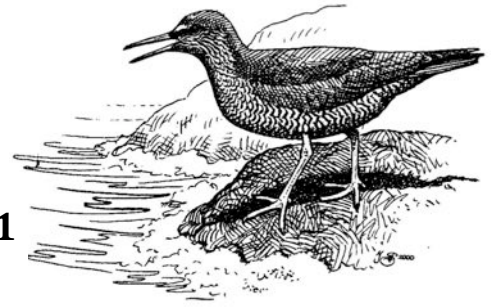


Wandering Tattler

Dec. 2020/Jan. 2021
Volume 70, Number 4



The Voice of SEA AND SAGE AUDUBON, an Orange County Chapter of the National Audubon Society

President's Message

Gail Richards, President

Our members have long supported Sea and Sage's important conservation, education, and science projects to protect birds and their habitats, with ongoing donations to the chapter. The mailing of this newsletter should correspond fairly closely to the mailing of our Annual Appeal. Please consider an end-of-year gift to further benefit birds.

In response to Covid-19, Sea and Sage leadership promptly took steps to suspend all in-person activities, conduct our elections electronically, and close the Audubon House. Our doors were closed, but we pivoted to think creatively about what we could do differently to sustain our programs and continue our important work. We embraced "Zoom" to continue all of our committee meetings, General Meetings, and 4th Tuesday Conservation Lectures. Our Education Committee continued their outreach through virtual lessons for children. The Conservation Committee held virtual meetings with lawmakers. Two new programs were created to further engage our membership. Backyard Birding encourages the enjoyment of birds while at home. Social Get-Togethers are being offered through Zoom, to facilitate friendly conversations on topics of interest with others.

Unfortunately, many of the in-person events that were canceled (Bat Walks, the Annual Dinner, the BBQ and Pancake Breakfast) were fundraisers. With revenues lost from these event cancellations, we need your support more than ever! We know times are hard for many this year, but if you are able, please consider helping us with a donation of any amount. Sea and Sage Audubon is blessed with the kindness of an anonymous donor who has once again offered to match dollar-for-dollar, every contribution of \$150 or more, up to a total of \$15,000. We hope you can help us make full use of this opportunity! Mailing Address: Sea & Sage Audubon, PO Box 5447, Irvine CA 92616

With your help, our dynamic chapter will continue to reach out to the people of this beautiful area, especially the youngsters, with programs to bring people to nature. Together, our work will make a difference in the lives of people and the lives of birds and other wildlife.

General Meeting - Online Presentation

Friday, January 15th - 7:00 PM

Via Zoom

"Insects: My Adventures and Discoveries while Exploring in Nature"

presented by Bettina Eastman

Bettina has been a volunteer at Sea and Sage for over 25 years. She is the Coastal Christmas Bird Count Compiler, works with "Outdoor Adventures" school tours and is very active on the Conservation Committee where she helps to manage the "Bird Seasons at the Marsh" Phenology study. Bettina holds a degree in Biology with an emphasis on Zoology. During her studies she concentrated her focus on animals by taking classes in Entomology, Herpetology and Marine Biology. Although she started her field studies with birds almost 30 years ago, she enjoys all aspects of nature. And, she truly loves to teach others about what she has learned over the years.

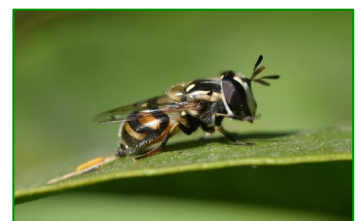
During her program, she will show photographs of some interesting insects she has seen in areas ranging from Orange County to as far away as Costa Rica. She will share some fun facts about them and information about how and where to find them. Her desire is to keep things simple without getting too technical about them. She will share some really interesting and unique information about the insects that you may not know about, or may never have seen for yourself.

Please join us for this fun filled program where you too may become a fan of these teeny creatures.

Our Meeting Room opens at **6:30 PM**. Join us for some **optional social activities** prior to the 7:00 PM meeting. Here is the link you will need to join the meeting:
<https://us02web.zoom.us/j/88697282568>

See you there (virtually). If this link isn't working for you, try Meeting ID: 886 9728 2568

Jonathan Aguayo, Programs Chair



Conservation News

Susan Sheakley, Conservation Chair



Our next '4th Tuesday' Conservation Lecture is planned for Tuesday January 26th. Please join us!

'4th Tues.' Conservation Lecture

Tuesday, Jan. 26th – 7:00 pm

by Zoom

Doors will open at 6:30

"Climate Smart Solutions for Grassland Birds: Conservation Ranching California"

*Matt Allshouse, Audubon California,
Conservation Ranching Program Manager*



Cattle on Audubon's 6,800-acre Bobcat Ranch in California. Photo: Dash Weidhofer/Audubon

We invite you to meet Matt Allshouse and learn about Audubon's Conservation Ranching Program. Matt says:

"Grassland bird conservation is inextricably linked to management practices on millions of acres of rangelands, the vast majority of which are privately owned. Significant grassland habitat enhancement can only be achieved through cooperative approaches that work with ranchers that live and work on these lands. Audubon's Conservation Ranching Program uses an innovative, market-based approach to connect conservation-conscious consumers to ranchers who employ bird-friendly management practices in raising their livestock. The program addresses loss in ecosystem function and health through the conservation of focal bird species and the habitat they depend upon. It incentivizes bird-friendly livestock management practices, emphasizing regenerative grazing approaches that improve soil health, diversify habitat structure, and ensure environmental sustainability that benefits pollinators and other grassland wildlife."

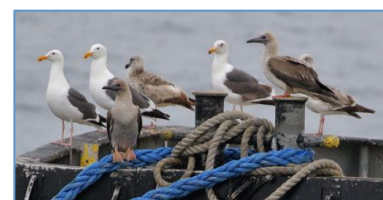


photo by Don Hoechlin

Our speaker, a rangeland ecologist, has 13 years of experience associated with land policy, management, and science. Matt served as Ranch Manager for Antelope Springs Land and Cattle in Wyoming, as a Biologist for the Peregrine Fund in Belize and Guatemala directing conservation field research, and as Ecologist with the consulting firm Trihydro

Corporation focusing on restoration ecology. He holds a dual Bachelor's degree from the University of Wyoming in Environment & Natural Resources and Rangeland Ecology & Watershed Management.

Instructions to join the Jan. 26th Zoom meeting will be posted January 1st on our home page at www.seaandsageaudubon.org (Under Conservation, look for '4th Tuesday') See you then!



Climate Corner: Here's a bill to watch that will protect seabirds and help control climate change.

The Ocean-Based Climate Solutions Act of 2020

was introduced last month in the U.S. House of Representatives to address the impact of climate change on our oceans and coasts. The 300-page bill seeks to restore coastal ecosystems, strengthen marine mammal conservation, reduce carbon emissions, improve international oversight, and protect 30% of ocean habitats by 2030, using both mitigation and adaptation approaches.

Good news from Audubon California!



Each spring and summer, Audubon California works with landowners and partners to protect the Tri-colored Blackbird. In 2020, they protected 177,000 birds – 100% of the fifteen colonies across four counties.

***Read more on Audubon's website.**

Social Get-Togethers with Zoom

You are invited to join our online social get-togethers designed as opportunities to chat with fellow birders about topics of mutual interest. We've already successfully hosted six get-togethers via Zoom and more are scheduled. It's an easy, safe and fun way to see your Sea and Sage friends and to perhaps make some new ones! Don't miss out on the opportunities listed below. More sessions will be added in the coming weeks so check back with the website for new additions. **Go to the Sea and Sage website to register for one or more sessions**

Session coordinators are Kim King & Chris Byrd. Questions?

Contact: seaandsagezoom@gmail.com

**CURRENTLY AVAILABLE SESSIONS INCLUDE THE FOLLOWING –
See website for links.**

- **How Covid-19 is Affecting Birding, Yours and Others**

Hosted by Carolyn Noble

Friday, December 4, 11:00 AM

Has Covid-19 changed your birding habits? Have you noticed anything different about the birds you've seen? Do you think this virus will bring changes to birding that will be long-lasting? What can we learn from these months of social distancing? Join us for an informal discussion of impacts of the virus on your birding and that of your friends and acquaintances.

- **Figure It Out! Mystery Bird Photo Sharing**

Hosted by Bruce Aird and Vic Leipzig

Saturday, December 5, 7:00 PM

Have you taken photos of birds you can't identify? Most of us have! Send in up to three of your Mystery Bird photos, then join a Zoom session led by Bruce Aird and Vic Leipzig where the group will try to solve the mysteries. (No, you don't need to submit photos to join this session.) After registration, you'll be sent instructions for sending in photos.

- **Trivia Night!**

Hosted by Kimberly Vargas Roberts and Ashley Hopkins

Monday, December 7, 7:00 PM

Join us for our Inaugural Sea & Sage Trivia Night hosted by Kimberly Vargas Roberts and Ashley Hopkins who have created a challenging (yet still fun) set of questions to test your knowledge of all things related to birds and birding. All ages and skill levels welcome! Trivia Night will be hosted on Zoom and is all about having fun while possibly learning something new. Let the games begin

- **Sea and Sage Reading Group**

Hosted by Kim King

Wednesday, December 16, 10:00 AM

Join us for our monthly Sea & Sage Reading Group session. We're a new reading group and our agenda is still a bit "up in the air." We'll either be finishing up our discussion of How to Know the Birds: The Art and Adventure of Birding by Ted Floyd or we'll be discussing Prodigal Summer by Barbara Kingsolver. We'll firm up our agenda for this meeting and for the 1st half of 2021 as soon as possible, so keep checking back.

- **How Did You Get Interested in Birding?**

Hosted by Sylvia Gallagher

Tuesday, December 29, 7:00 PM

Join us to share your story of "how you got interested in birding." Maybe it's a story of the very first experience that you had that got you interested. Or perhaps it's a special person in your life that turned you on to birding. Also, to keep things interesting, be ready to tell us about the very first bird that you identified all by yourself and how you did it.

- **Ask a Birder**

Hosted by Bruce Aird and Vic Leipzig

Saturday, January 9, 7:00 PM

What puzzles you about birds and their behaviors? Do you wonder why they seem to look different in different seasons? Where have they gone when you can't find a favorite species? Maybe you can stump the experts! Perhaps your question will spark a discussion where we all learn something! Send your questions in ahead of time, then join this virtual session to discuss possible answers with a pair of seasoned Sea and Sage birders. After registration, you'll be sent instructions for sending in your questions.

Questions? Contact coordinators, Kim King & Chris Byrd, at seaandsagezoom@gmail.com

Orange County Rarities

by Doug Willick



To report a RARE or UNUSUAL bird, or to receive reports from other birders about rare or unusual bird sightings here in Orange County, send an email to: OrangeCountyBirding+subscribe@groups.io

Fall is typically the period when the largest number of "rarities" occur in Southern California, and October 2020 was certainly no exception. The past month saw good numbers of interesting birds turn up in Orange County; these included birds passing through in the latter half of our fall migration period, as well as many that are already likely settling in for the winter. So with no further delay, we'll jump right in.

Interestingly, a few of the more noteworthy rarities this past month involved pelagic species. However, two of these were apparently only seen by a single observer; these included a **Flesh-footed Shearwater** and a **South Polar Skua**, both seen offshore on Oct. 15. There are fewer than five county records for either of these pelagic species, both of which are more likely to be encountered well offshore (typically beyond the limits of what are considered Orange County waters for pelagic species). Fortunately, one particular seabird rarity in SoCal, a **Masked Booby**, has been exceptionally obliging; a subadult bird has been consistently seen resting on the Newport Harbor mouth jetties, since it was first noted on Sept. 28. The bird was last reported on Nov. 3.

Although small numbers of **Snow Geese** regularly winter in the county, at locations such as the Seal Beach National Wildlife Refuge, birds at less typical locations included multiple Snow Geese at Crystal Cove State Park, Nov. 8, and an immature at Pearson Park, in urban Anaheim, Nov. 9-10+. A **Hooded Merganser** at the Bolsa Chica Ecological Reserve, Oct. 31, was unexpected for along the immediate coast, especially in a coastal saltmarsh habitat. The Bolsa Chica Ecological Reserve (BCER) happened to be the site for quite a number of good finds over the last month. A **Red-necked Grebe** turned up here Nov. 5 (still present on the 10th). A **Pacific Golden-Plover** has been present from Oct. 24 to Nov. 11+. A juvenile **Tricolored Heron** discovered at BCER on



TRICOLORED HERON – by Don Hoechlin

Oct. 2 was still delighting observers through at least Nov. 11, while a juvenile **Little Blue Heron**, Oct. 17-Nov. 4+, provided local birders with plenty of identification practice (to

differentiate from the relatively abundant Snowy Egrets). As many as four **Yellow-crowned Night-Herons** lingered at BCER into November.

And last but not least, a **Short-eared Owl** was seen at BCER and the adjacent Harriett Wieder Reg. Park



Juv. LITTLE BLUE HERON – by Don Hoechlin

(HWRP) from Oct. 30 through at least Nov. 11.

A **White-winged Dove** was found in the Bommer Canyon Open Space Preserve in Irvine, Oct. 19; more surprising was the fact that it lingered here, and was refound on Oct. 20-21. On Oct. 20 a **Common Ground-Dove** was photographed in Bommer Canyon. This species was fairly easy to find in north Orange County during the 1980s and 1990s, being present even in some urban parks and open space areas, as well as orchards and other agricultural land; unfortunately, resident birds have now all but disappeared from the county. Shorebird highlights were limited this past month—however, a probable **American Oystercatcher** was in Laguna Beach, Oct. 8-9. Unfortunately, observations and photographs were limited, and were possibly not adequate to confirm this very rare visitor to SoCal. **Pacific Golden-Plovers** returned to the Seal Beach Naval Weapons Station in Sept., and during the last month as many as four were present on Nov. 2. Two **Pectoral Sandpipers** lingered at the San Joaquin Wildlife Sanctuary (SJWS) through Oct. 11, with one still present through at least the 24th. Most exceptional was a **Heermann's Gull** at the SJWS, Nov. 3. This gull very rarely wanders inland from the immediate coast; this was a first record for SJWS, and is likely the furthest inland one was been recorded in the OC. A juvenile **Sabine's Gull** at SJWS on Oct. 9, was another rare gull for SJWS, this normally being a pelagic species.

An adult **Neotropic Cormorant** was discovered at Yorba Regional Park (YRP) on Oct. 7, where it lingered through at least the 17th. The juvenile **Little Blue Heron** found in San Diego Creek back in mid-Sept. was still present through at least Oct. 23. Three **Cattle Egrets** made a brief stop at SJWS, on Oct. 23. In addition to the **Yellow-crowned Night-Herons** mentioned above, for BCER, as many as *five* were again in the Dana Point Harbor area during October, with three hatch-year birds at the Talbert Nature Preserve and another in Talbert Marsh also found during October. A **Golden Eagle** photographed over Mason Regional Park, Oct. 28, was noteworthy for being that close to the coast. Two **Swainson's Hawks** lingered in the Seal Beach area through at least Oct. 14. An adult **Zone-tailed Hawk** in the Arroyo Trabuco area of Rancho Santa Margarita, Oct. 24, was presumably a returning bird that has wintered in this area for several consecutive years.

Two **Gray Flycatchers** were discovered during the last month, with individuals at San Juan Creek Park, Oct. 18, and at Gilman Park, Oct. 30. Late **Hammond's Flycatchers** included one in Mission Viejo, Nov. 1, and a continuing bird at Huntington Central Park (HCP) through Nov. 2. An **Eastern Phoebe** at Gilman Park, Oct. 25, was yet another nice bird for that location. Single **Plumbeous Vireos** were found at four locations during the last month: YRP, Oct. 6; a private residence in Huntington Beach, Oct. 10; at El Modena Park (in Orange), Nov. 2, and at Pioneer Park (Anaheim), Nov. 10; the latter two individuals are

Orange County Rarities

by Doug Willick



To report a RARE or UNUSUAL bird, or to receive reports from other birders about rare or unusual bird sightings here in Orange County, send an email to: OrangeCountyBirding+subscribe@groups.io

likely to be wintering birds. Two **Mountain Bluebirds** appeared at Mile Square Regional Park (MSRP), Nov. 8-9.



MT. BLUEBIRD - by Don Hoechlin

A **Purple Finch** in Bommer Canyon, Oct. 20, was noteworthy for the coastal foothills. **Green-tailed Towhees** have turned up in the county in well-above-average numbers this fall; in addition to about five in Sept., birds during the last month included a continuing bird at

HWRP, through Oct. 20; one at HCP, Oct. 14; *two together* in Hot Springs Canyon, in the Santa Ana Mountains, Oct. 18; and one at Hart Park (Orange), Oct. 29-Nov. 1+.

Brewer's

Sparrows were found this fall, with at least 13 Clay-colored, and 18 Brewer's. This month, Clay-colored were at: MSRP, HCP, Russell Cook Park,



CLAY-COLORED SPARROW - by Don Hoechlin

O'Neill Regional Park (ONRP), and Ralph Clark Park. Brewer's were at: SJWS, two at ONRP, and Laguna Niguel. Higher than normal numbers were also tallied for **Black-throated Sparrow**; an adult was found in the U.C. Irvine area, Nov. 7-9+.

As many as seven **Vesper's Sparrows** were reported in October, with individuals at: SJWS (a continuing bird), the Great Park's Bosque Trail,



BLACK-THROATED SPARROW - by Don Hoechlin

Peter's Canyon Regional Park, HWRP, Moulton Meadow Park, Portola Springs Community Park, and in Ladera Ranch. A **Grasshopper Sparrow** at Irvine Regional Park, Oct. 23, was a nice find. A **Swamp Sparrow** was at HCP, Oct. 24-25, and a **White-throated Sparrow** was found in ONRP, Oct. 30-Nov. 3. **Yellow-headed Blackbirds** were present at Edison Community Park (ECP Huntington Beach), Oct. 7, and at SJWS, Oct. 30.

While rare sparrows were found in greater than usual numbers, rare warblers were actually below what we've been accustomed to in October. **Black-and-white Warblers** included one at Gilman Park, Oct. 11; one at Serrano Creek Park, Oct. 31 (presumably back for its second winter); and one at Aurora Park, Nov. 3 (presuming returning for its third consecutive winter).

A **Hooded Warbler** at Aurora Park (where one wintered about a dozen years ago), Oct. 13, was exceptional. A **Palm Warbler** was at ECP, Oct. 10, with another at MSRP, Nov. 6. Unusually scarce this fall, a **Blackpoll Warbler** was at HCP, Oct. 24. A probable **Rose-breasted Grosbeak** was in Mission Viejo, Nov. 4. A **Dickcissel** was a very nifty yard bird addition for a private residence in Costa Mesa Oct. 25-26.



photo of Doug taken by Gretchen McCausland

Sea and Sage has been privileged to have Doug Willick write his informative monthly "Orange County Rarities" articles for the Tattler ever since Sept. 1988. Due to his habit of taking detailed field notes whenever he went birding, he developed an exceptional knowledge of the birds in Orange County, especially the rarities.

In 1985 he took over the job from Sylvia Gallagher, of writing up the unusual bird records for the quarterly journal of *North American Birds*, and in 1986, he began work with Robb Hamilton on *The Birds of Orange County, California, Status and Distribution*. This book has been an excellent source of information for our Orange County birders.

When Doug first started to write the monthly articles for the Tattler, he had to do so by hand since he didn't have use of a computer at that time. Then he would mail his article to me and I would transcribe it into a typed version for the newsletter. Thankfully that laborious procedure is no longer being used and all of us use computers now.

In December, Doug will be moving out of state to Marble Falls, Texas, where he will be living with his sister and brother-in-law. He will have new birds to learn about, and I'm sure the avid birders in the area will welcome him.

Thank you Doug for your many years of service to Sea and Sage. We'll miss you!

— N. Kenyon

Chapter News & Announcements

OC Western Snowy Plover Winter Survey ~ January 2021 ~

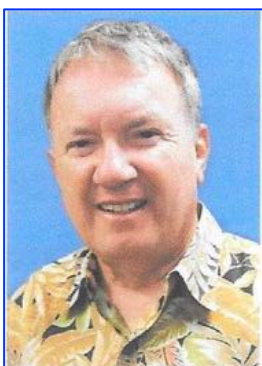
The OC Western Snowy Plover Winter Survey will take place in January, and as usual, will coincide with the Fish and Wildlife Service (FWS) Winter Survey. Dates TBA as soon as FWS releases the information. We welcome our previously trained surveyors to contact Cheryl Egger, Volunteer



Coordinator, now with their selection of a beach segment to survey in January. OCSNPLSurvey@gmail.com Be sure to watch our chapter website for the January survey dates and a possible training session via Zoom.

Please visit our website for more information:
<http://www.seaandsageaudubon.org>

John McKeever



It is with sorrow that we report that John McKeever passed away on October 19th. He was an active participant in Sea and Sage activities. Birding was a passion with John. He was an active participant in our field trip program and led field trips to Prado Basin, Lake Mathews, the San Jacinto Wildlife Area, and San Diego. He also participated in many of our Christmas Bird Counts. Those who

knew him knew a friendly, outgoing person. On field trips he would often talk to strangers to explain what the group was doing and show in a field guide what birds we were seeing. Everyone appreciated his knowledge and exuberance.

John was born July 17, 1941. He grew up in the Pasadena area and attended John Muir High School at the same time that Sylvia Gallagher was a chemistry teacher there. He graduated from UC Santa Barbara and served a hitch with the US Marine Corps. Later he earned a Masters Degree from USC. His career was in teaching and administration in the Irvine School District. A private funeral was held at Rose Hills Cemetery in November.

A fund has been set up at Sea and Sage in his honor. Contributions may be made at:

<https://www.seaandsageaudubon.org/Education/SponsorASchoolBus.pdf>

— Matt and Carolyn Biller

Where is Debby Thyssen now?

Those of you who used to frequent Audubon House for a visit with staff or browse through the merchandise before Covid-9 struck, may be wondering where Debby Thyssen went. (Debby was our Sales Manager at Audubon House for many years. She used to live at Lake Arrowhead, but when her husband died, she decided to move back east to be closer to her family.)

She moved to Wisconsin and is now living in a house by a lake in a rather isolated area. She said her new place is very old world charming with log and wood walls and floors, 4 acres of woods with low and high spots, and a lake which wraps around 2 sides of her property which is on a small peninsula. She has only four neighbors on the east side of the lake and is the only full timer there in the winter. She said that beautiful sunrises come up over the lake and she can't wait for spring to set up more feeders and put in native plants. So far, only Blue Jays and Chickadees come to the feeder for seed with an occasional grey squirrel or chipmunk, lots of deer tracks and a fox. (It must be quite a change from southern California but she seems to like it.) Her driveway is about a quarter mile long so she hired the local snow plow guy to keep her driveway clear until she gets a snow blower. She did admit that it feels pretty isolated there with no one within a mile in the winter. . .

I am hoping to get a photo from her of her house and the woods around it. If you want to drop her an email, let me know, and I will forward her email address to you. I'm sure she would like to hear from her friends in CA.

— N. Kenyon

Raptor ID Workshops presented by Bill Clark via Zoom



photo by Don Hoechlin

INTRODUCTORY SESSIONS

DIURNAL RAPTORS: Fri & Sat,
January 15-16, 2021
SESSIONS
(50 minutes via Zoom)

INTERMEDIATE/ADVANCED SESSIONS

DIURNAL RAPTORS: Fri & Sat
February 5-6, 2021

(SESSIONS 1 hour each via Zoom)

Full information is on page 8-9 of this issue.



Sea and Sage Audubon Society

~ Sparrows ~

An Intermediate/Advanced Birding Skills Workshop
Presented by Sylvia Gallagher



When we start birding, sparrows seem to be a mishmash of streaky little birds that all look alike. But after we've been at it a while, we begin to realize that they can be grouped into categories with distinctive shapes and that most of them also have distinctive sets of field marks. (To keep us on our toes, there are of course a few look-alike groups.) They also have their own behavior patterns and preferred habitats, which are an aid to identification. Voices are distinctive, too—and an extremely important part of identifying them. However, since some of the workshop participants will not have done Sylvia's introductory aural workshop, *Learning California Bird Sounds*, we'll not learn them here. The sounds of those that breed in the west are covered in that workshop or one of Sylvia's three other aural workshops for which that introductory one is a prerequisite.

If you would like to learn more about these LBJs (little brown jobs), Sylvia Gallagher will present a Zoom workshop starting the week of Jan. 4-7, 2021. It will last until we've covered the material, but no later than Memorial Day weekend. In this workshop we'll cover all of the sparrows of North America (US and Canada). Most have occurred in California. Although longspurs were recently placed in a different family from sparrows, we'll cover them and their relatives, too. To be precise, we'll consider the families Calcariidae and Passerellidae except for the towhees and juncos, which were dealt with in the workshops on the deserts and mountains, respectively.

This workshop presumes little prior knowledge, mainly a fairly good feel for how to tell a sparrow from some other type of bird.

Required books are the **National Geographic Field Guide** (must be 7th edition) and **Sibley Guide to Birds** (2nd edition). Also recommended, but not required, are **Sparrows of the US and Canada** by Beadle & Rising (2002), **Sparrows & Buntings** by Byers, Curson, and Olsson (1995), and **Peterson Reference Guide to Sparrows** by Wright (2019). Every one of these five books has its good and bad features. You can actually do very nicely with just the first two. The two oldest ones may only be available used. Sea and Sage's bookstore is closed due to COVID-19, so you'll have to purchase your books elsewhere.

Five **Zoom** sections will be offered starting on the dates indicated below. Each will meet once a week, including holidays.

- MON. evenings - starting Jan. 4th - 7:00 to 10:00 pm
- TUES. mornings - starting Jan. 5th - 9:00 am to 12 noon
- WED evenings - starting Jan. 6th - 7:00 to 10:00 pm
- THURS. mornings - starting Jan. 7th - 9:00 am to 12 noon
- THURS. evenings - starting Jan. 7th - 7:00 to 10:00 pm



Maximum enrollment for each section is 21. If any section does not have at least 12 people enrolled by Dec. 24, it will be canceled. Reservations may be mailed (or hand delivered to my mailbox) no sooner than Mon., Dec. 7 (2 day penalty for early postmarks). A donation of \$200.00 is requested. Enclose at least \$50.00 with your reservation. The rest may be mailed later. Checks should be made out to Sea and Sage Audubon, not me. Subsequent checks should be mailed to me, not directly to the Sea and Sage treasurer.

Send your reservation on or after Dec. 7 to Sylvia Gallagher, 21562 Kaneohe Ln., Huntington Beach, CA 92646. Enclose your reservation form (below), your check (minimum \$50 to start), and a long (4" x 9 1/2") self-addressed stamped envelope (SASE). Confirmations will be mailed Dec. 28.

Since the class is virtual, using Zoom, workshop materials will have to be distributed by email, and you'll have to print them for yourself.

There will be no field trips unless you, the students, plan some COVID-safe ones to look for particular species. To accompany the workshop as a follow up, Roy Poucher's company, Birding Odysseys, will offer duplicate tours to North Dakota in mid-June. They are not sponsored by Sea and Sage, but will be designed to search for many of the birds we'll be studying on their breeding territories. You'll get more information from Roy.

Enrollment Form - Birding Skills Workshop (Sparrows, 2021)

Names of all participants _____

Addresses _____

City & ZIP _____

Email (Print unambiguously neatly!!!) _____ Check for \$ _____ enclosed

Phone(s) _____ SASE enclosed? _____

Check or rank at least two choices of section:

MON. pm _____ TUES. am _____ WED. pm _____ THURS. am _____ THURS. pm _____





Sea and Sage Audubon Society **Raptor Identification Workshops**



Introductory Workshop: Fri-Sat, Jan. 15-16, 2021
Intermediate/Advanced Workshop: Fri-Sat, Feb. 6-7, 2021

presented by William S. Clark

Comprehensive workshops on raptor identification will be presented. The instructor for the courses will be Bill Clark, coauthor of *Hawks*, the raptor field guide in the Peterson series, and the *Photographic Guide to North American Raptors*.

Although the pace and emphasis will vary with the experience of the participants, both workshops will first cover the basic field marks for the identification of California raptors. Then, a more thorough coverage of the field ID of *Accipiters*, eagles, and *Buteos* will be presented. Also discussed will be molt and its use in field ID, terminology, albinism and other unusual plumages. The field ID of vagrants to be expected in California will be covered, as well as how to document their sightings. Bill Clark has over 50 years of experience working with birds of prey and has published on a variety of raptor subjects, including many papers on raptor identification.

An **INTRODUCTORY WORKSHOP** will be presented Jan. 15-16. The workshop will start with about two hours of classroom instruction on Friday evening, starting at 6:00 pm using Zoom. Two Zoom sessions follow on Saturday morning (9:00 – 11:00 am) and afternoon (1:00 – 3:00 pm).

BASIC VIRTUAL RAPTOR FIELD IDENTIFICATION

Zoom talks by Bill Clark, Sea & Sage Audubon

DIURNAL RAPTORs ~ Friday-Saturday, January 15-16, 2021 ~ SESSIONS (50 minute Zoom)

FRIDAY EVENING (6-8 PM via Zoom)

- I.** Introduction. (Field marks, shape, measurements, terminology feathers, molt)
- II.** ID Review. Vultures, Ospreys, and Harrier

SATURDAY MORNING (9-11 AM via Zoom)

- III.** Accipiters: Sharp-shinned vs Cooper's Hawks.
- IV.** Buteonines

SATURDAY AFTERNOON (1-3 PM via Zoom)

- V.** Eagles
- VI.** ID Summary

The **INTERMEDIATE/ADVANCED WORKSHOP** will take place Feb. 5-6 and follow the same time schedule as the introductory one. It is designed for people who have had some experience observing hawks, maybe only the Jan. 15-16 workshop. The basic field marks will be covered, but more quickly, allowing time for several advanced topics.

INTERMEDIATE/ADVANCED RAPTOR FIELD IDENTIFICATION

Zoom talks by Bill Clark, Sea & Sage Audubon

DIURNAL RAPTORs ~ Friday-Saturday, February 5-6, 2021 ~ SESSIONS (an hour each)

FRIDAY EVENING (6-8 PM via Zoom)

- I.** ID review
- II.** Cooper's vs Sharp-shinned Hawks

SATURDAY MORNING (9-11 AM via Zoom)

- III.** Buteos
- IV.** Eagles

SATURDAY AFTERNOON (1-3 PM via Zoom)

- V.** Vagrants & how to document rarities
- VI.** Unusual plumages & ID Summary

The text for the workshop will be the second edition of *Hawks* by Clark and Wheeler (Houghton Mifflin Co., 2001). Recommended, but not required, is *Photographic Guide to North American Raptors* by Wheeler & Clark.

Bill Clark has over 50 years of experience working with birds of prey and has published on a variety of raptor subjects, including many papers on raptor identification.

The cost of the workshop is \$100.00 for each weekend—to be enclosed with your registration. (Make check payable to Sea & Sage Audubon.)

Enrollment each weekend will be limited, and it may be cancelled if there is insufficient registration. Don't wait until the last minute to register; you don't want your weekend to be cancelled because you forgot to register! Confirmations and further information will be mailed as soon as we have sufficient enrollment.

Mail your enrollment form, check for the workshop fee, and a long, self-addressed stamped envelope (SASE) to: Raptor Workshop, c/o Sylvia Gallagher, 21562 Kaneohe Ln, Huntington Beach CA 92646. Your form should be **postmarked no sooner than Dec. 14, 2020** (two-day penalty for early reservations.) If you have questions, email Sylvia at sjrgallagher@yahoo.com (preferred), or call her at 714-962-8990.

Enrollment Form - Raptor Weekends with Bill Clark - 2021

Names of all participants _____

Address(es) _____

City _____ ZIP _____ Phone(s) _____

E-mail _____ SASE enclosed? _____

Check your choice(s) of weekends. (Some people attend both.)

Introductory (Fri. evening, Sat., Jan. 15-16) - \$100 per person

Intermediate/Advanced (Fri. evening - Sat, Feb. 5-6) — \$100 per person

Workshop fees enclosed? (Make check payable to: Sea and Sage Audubon Society)

If you are also making a reservation for Sylvia's Sparrows workshop, separate SASEs and checks are necessary.



Winter at the Marsh

Trude Hurd, Project Director of Education



Mistletoe Hanging in Sycamore



White Pelicans Foraging



Shovelers Keeping Warm

Winter is the season of RAIN at the San Joaquin Wildlife Sanctuary. Rain provides plenty of water for plants and animals after the dry season of autumn. Winter days and nights are cool but mild compared to the rest of the country. Runoff from rain may fill the San Diego Creek, and I have had to evacuate the premises as a precaution against flooding! That's why the Irvine Ranch Water District built the flood wall around the buildings (we're actually down in one of the former ponds from the duck hunting era.) Trails may be wet in areas but are still passable and dry quickly so you can come enjoy a winter walk!

Many trees at the marsh are "**winter-deciduous**": they lose their leaves in fall to conserve water, and then regrow leaves after the rainy winter. Examples are cottonwood, willows, elderberry, and sycamore. If you have never seen mistletoe in the wild, look for it hanging on the bare branches of the parking lot sycamores. You might find a Phainopepla feeding on the mistletoes' white sticky fruit. The black seeds are not digested but pass through the bird unharmed and can grow into a new plant wherever it falls.

With winter rain, many plants like California sagebrush and California sunflower start growing new leaves. Avoid contact with dwarf stinging nettle which grows along the banks of the rectangular ponds and even up onto the trails.

Winter is when we see the greatest diversity of birds at the marsh. Scan the ponds for wintering duck species and you might identify Mallard, Northern Shoveler, Cinnamon Teal, Green-winged Teal, Blue-winged Teal, Gadwall, Bufflehead, and Ruddy Duck. In early morning, listen for Canada Geese *honking* as they leave

the marsh to feed at nearby parks and golf courses. Large flocks of American White Pelicans winter at the marsh, feeding on carp and other fish in the deeper ponds and creek. Flocks of White-crowned Sparrows also winter at the marsh and you can see them along the trail edges picking small plant seeds. Yellow-rumped Warbler, Blue-gray Gnatcatcher, and Vermillion Flycatcher actively search for any insects that are out on a sunny day.

Like us, birds are warm-blooded ("**endotherms**") which means they maintain a constant body temperature. Their average of 105°F is much higher than our 98°F to help fuel their flight and high metabolism. Keeping a constant temperature takes energy in the form of food which is why birds eat so much in winter and why it is so important to not disturb them. Birds need time to eat to keep warm! There are other ways birds keep warm in colder weather: they fluff their feathers so pockets of air are trapped next to their bare skin and thus warmed; they stand on one leg and tuck the other close to their body to reduce exposure; they turn their heads and tuck their beak beneath the back feathers; and they take shelter in dense shrubs. Good adaptations!

Because of the cold weather, only a few insects are active on sunny days such as bees and butterflies. Most reptiles like lizards, turtles, and snakes hibernate until weather becomes warmer. After a rain, listen as tree frogs make *croaking* sounds in the vegetation to attract mates.

The Audubon naturalists and I invite you to safely explore the San Joaquin Wildlife Sanctuary this winter to discover how plants and animals survive in this (hopefully) wet season.

Directions and Membership

Sea and Sage Audubon Society's mission is to protect birds, other wildlife, and their habitats through education, citizen science, research, and public policy advocacy.



Tattler Subscriptions

Non-Audubon members or members from other Audubon chapters who wish to subscribe to our chapter newsletter, may do so for \$14.00 per year. Make check payable to "Sea and Sage Audubon" and mail to: Tattler Subscriptions, 32 Almond Tree Ln, Irvine CA 92612

Go Paperless!

Sign up to receive your newsletter via email — get your issues faster, help save natural resources, reduce waste, and help our chapter save money! You can read it online or print out the pages you need to refer to more frequently. It is in pdf format and will look and print exactly like the original ones. Photos will be in color. Send an e-mail to nancykenyon@cox.net to start your paper-free Tattler delivery today! (offer good only for chapter members in good standing)

Remember Us in Your Will or Trust

Please remember to include "Sea and Sage Audubon Society" by name (tax ID#23-7003681) in your will or trust.

Directions to the San Joaquin Wildlife Sanctuary (5 Riparian View, Irvine) Our entrance is from Campus Dr., not Michelson

From the San Diego Fwy (405): Exit on Jamboree, south toward Newport Beach. At the 1st signal, Michelson, turn left. Continue on Michelson (past the old entrance to the SJWS) to the 5th signal which is Harvard and turn right. Drive to University & turn right. Drive to Campus Drive & turn right. Stay in the far right lane and immediately turn right onto Riparian View which will enter the San Joaquin Wildlife Sanctuary. The entrance road is marked by a green sign. If you miss the turn and reach Carlson, turn right and go around the block again to Harvard. The sanctuary is open every day from dawn until dusk.

Audubon House

AH is closed at the present time because of Covid-19. However the restrooms, trails, and parking lots are open.

Your Membership Payment

Do you want to join National Audubon and Sea and Sage? Use the membership form at the bottom of this page. An Individual Membership or a Family Membership is only \$20. Sea & Sage receives 100% of a chapter generated new member's dues for the first year. Mail the form and your check - payable to National Audubon Society - to Sea and Sage Audubon, PO Box 5447, Irvine CA 92616. If you want to use a credit card for your membership payment, go online to: <http://www.audubon.org/membership> If you have questions, please contact Membership Chair, Jim Kissinger, at membership@seaandsageaudubon.org

Temporarily Away or Moving?

Please notify Jim Kissinger of your new address if you are temporarily, or permanently, moving from your current address; or, let him know if you do not want to continue to receive the Tattler. This will save us postage.

Jim Kissinger, Membership Chair
membership@seaandsageaudubon.org

Audubon Membership Application

We invite you to become a member of the National Audubon Society and the Sea and Sage Audubon chapter. Members receive the AUDUBON magazine as well as the WANDERING TATTLER newsletter.

NEW MEMBERSHIP is \$20 for an individual or for a family. (The membership is good for one year.)

To join: Complete the form below & mail it along with your payment to: Sea and Sage Audubon, PO Box 5447, Irvine CA 92616

Make your check payable to: NATIONAL AUDUBON SOCIETY. Please pay by check only; do not send cash.

Or, go online to: <http://tinyurl.com/hyeaw67> (Our chapter code is C15)

To renew membership: renew directly with National Audubon by direct mail or online: (Renewals are \$20 per year.)

<http://tinyurl.com/zjbs5tt>

Name _____

Address _____

City, State, Zip _____

Phone _____

E-mail _____



C15

Sea and Sage Audubon
PO Box 5447, Irvine CA 92616

RETURN SERVICE REQUESTED

Non-Profit Org
U.S. Postage Paid
Santa Ana, CA
Permit No. 164



Season's Greetings!

BOARD MEMBERS

Executive Committee:

President	Gail Richards	714-267-2420
Vice President	Jonathan Aguayo	805-204-6986
Secretary	Ann Harmer	949-631-3322
Treasurer	Tom Van Huss	714-417-9940
Director 2021	Bruce Aird	949-458-1520
Director 2021	Vic Leipzig	714-848-5394
Director 2022	Samuel Bressler	657-378-5367
Director 2022	Star Howard	949-770-3177
Director 2023	Martin Fee	714-508-0630
Director 2023	Devon Bradley	949-287-1715
Past President	Doug Lithgow	714-962-4145

Committee Chairpersons:

Archives & Records	Chris Byrd	714-639-0967
Audubon House	Susan Sheakley	949-552-5974
Audubon House Volunteers		
Bird Information	Sylvia Gallagher	714-962-8990
Conservation	Susan Sheakley	949-552-5974
Counsel	Sean Sherlock	
Development	Cheryl Thomas	949-294-2275
Education	Carolyn Noble	714-731-9091
Events	Mary Joseph	714-848-8362
Exhibits	Mary Joseph	714-848-8362
Field Trips	Nancy Kenyon	949-786-3160
Finance	Hal Sheakley	949-552-5974
Membership	Jim Kissinger	949-713-1148
Newsletter Editor	Nancy Kenyon	949-786-3160
Orange County Spring Count	Darrell Wilson	949-559-4542
Partners in Flight	Janet & Al Baumann	
Programs	Jonathan Aguayo	805-204-6986
Publicity		
Raptor Research	Scott Thomas	949-293-2915
Science	Amber Heredia	714-812-2430
SJWS Liaison	Chris Obaditch	949-640-7234
Social Media	Sandrine Biziaux-Scherson	949-413-0297
Starr Ranch/Envir. Liaison	Pete DeSimone	949-858-0309
Webmaster	Nancy Kenyon	949-786-3160
Webpage: http://www.seaandsageaudubon.org		

STAFF

AUDUBON HOUSE	949-261-7963	
Marsh Education Project Director Trude Hurd	949-261-7964	
Education Assistant	Deborah Brin	949-261-7964
Sales Manager	Jan Hoidge	949-261-7963
Administrative Aide	Rebecca Craft	949-261-7963

OTHER CONTACTS

Wetlands & Wildlife Care Center – for injured or sick birds and other native wild animals in need of help (corner of Newland & PCH in HB) 714-374-5587. <http://www.wccoc.org/>

SCHEDULE of CHAPTER ACTIVITIES

December 2020:

01	Tues	Conservation Committee Mtg. via Zoom.....	6:45 pm
04	Fri	How Covid-19 is affecting Birding (Zoom)	11:00 am
05	Sat	Figure It Out! Mystery Bird Photo Sharing(Zoom)	7:00 pm
07	Mon	Reservations for Sparrows Class opens today	
07	Mon	Trivia Night	7:00 pm
08	Tues	Board Meeting via Zoom	7:00 pm
14	Mon	Reservations for Raptor ID Class opens today	
16	Wed	Sea and Sage Reading Group (Zoom)	10:00 am
18	Fri	NO GENERAL MEETING in December	
20	Sun	Northeastern Christmas Bird Count	 canceled
22	Tues	NO 4 th Tues Conservation Lecture in December	
27	Sun	San Juan Capistrano CBC	 canceled
29	Tues	How Did You Get Interested in Birding? (Zoom)	7:00 pm

January 2021:

03	Sun	Coastal Christmas Bird Count	 canceled
04	Mon	Sparrows Classes begin this week (see page 9)	
05	Tues	Conservation Committee Mtg. via Zoom	6:45 pm
09	Sat	Ask a Birder (Zoom)	7:00 pm
12	Tues	Board Meeting via Zoom	7:00 pm
15	Fri	GENERAL MEETING via Zoom	7:00 pm
15-16	Fri-Sat	Introductory Raptor ID Workshop with Bill Clark (via Zoom) . . .	
26	Tues	4 th Tues Conservation Lecture via Zoom	7:00 pm

February 2021:

6-7	Fri-Sat	Intermed/Adv Raptor ID Workshop with Bill Clark (via Zoom) . . .	
-----	---------	--	--